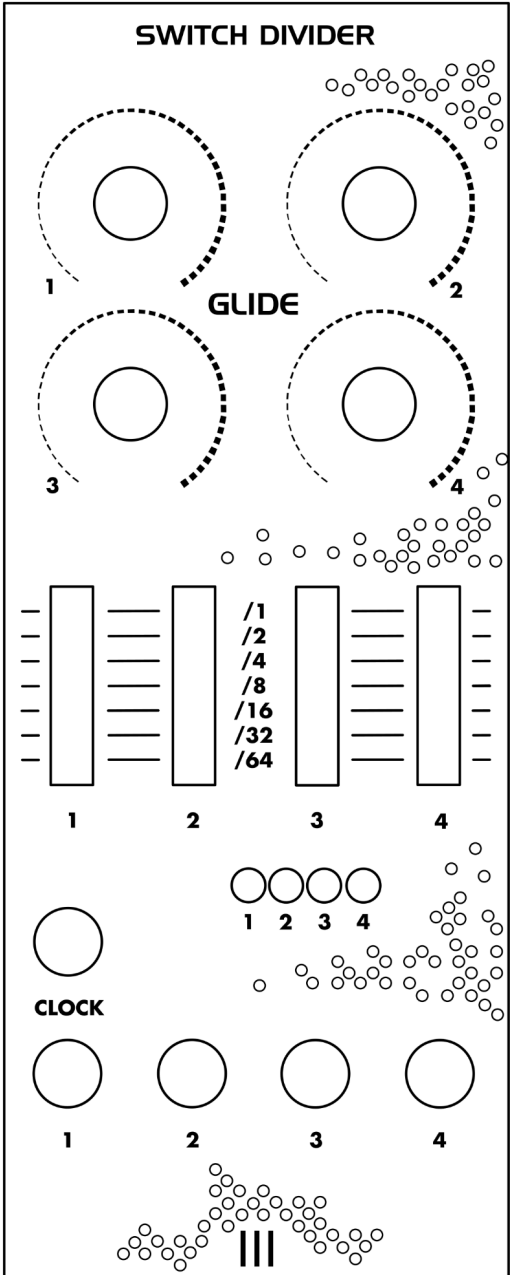


Tre Modular - Switch Divider

DIY Assembly Guide v3.3

Thank you for choosing Tre Modular.

In this guide, we will walk you through the process of assembling your very own Tre Modular - Switch Divider module.



Before You Begin:

This guide assumes a basic soldering proficiency, so if you're new to the craft, consider practicing on a spare PCB to build confidence.

Always adhere to proper soldering techniques, work in a well-ventilated space, and handle electronic components with care to ensure the longevity and optimal performance of your Switch Divider.

Ensure you have all the necessary components listed in the Bill of Materials. Familiarize yourself with the provided component list, and if any questions arise, don't hesitate to ask at support@tremodular.com.

BOM (Bill of materials):

Capacitors:

10uf (Electrolytic)- x2
1uf (Electrolytic) - x4
100n (104) - x7

Diodes:

1N4148 - x25
5v1 Zener - x4
1N4002 - x3
LED - x4

Resistors:

220r - x4
1K - x5
10K - x1
20K - x1
15K - x4
47K - x4
100K - x7

Switches:

7 Position Slide Switch - x4

Potentiometers:

B100K - x4

Connectors:

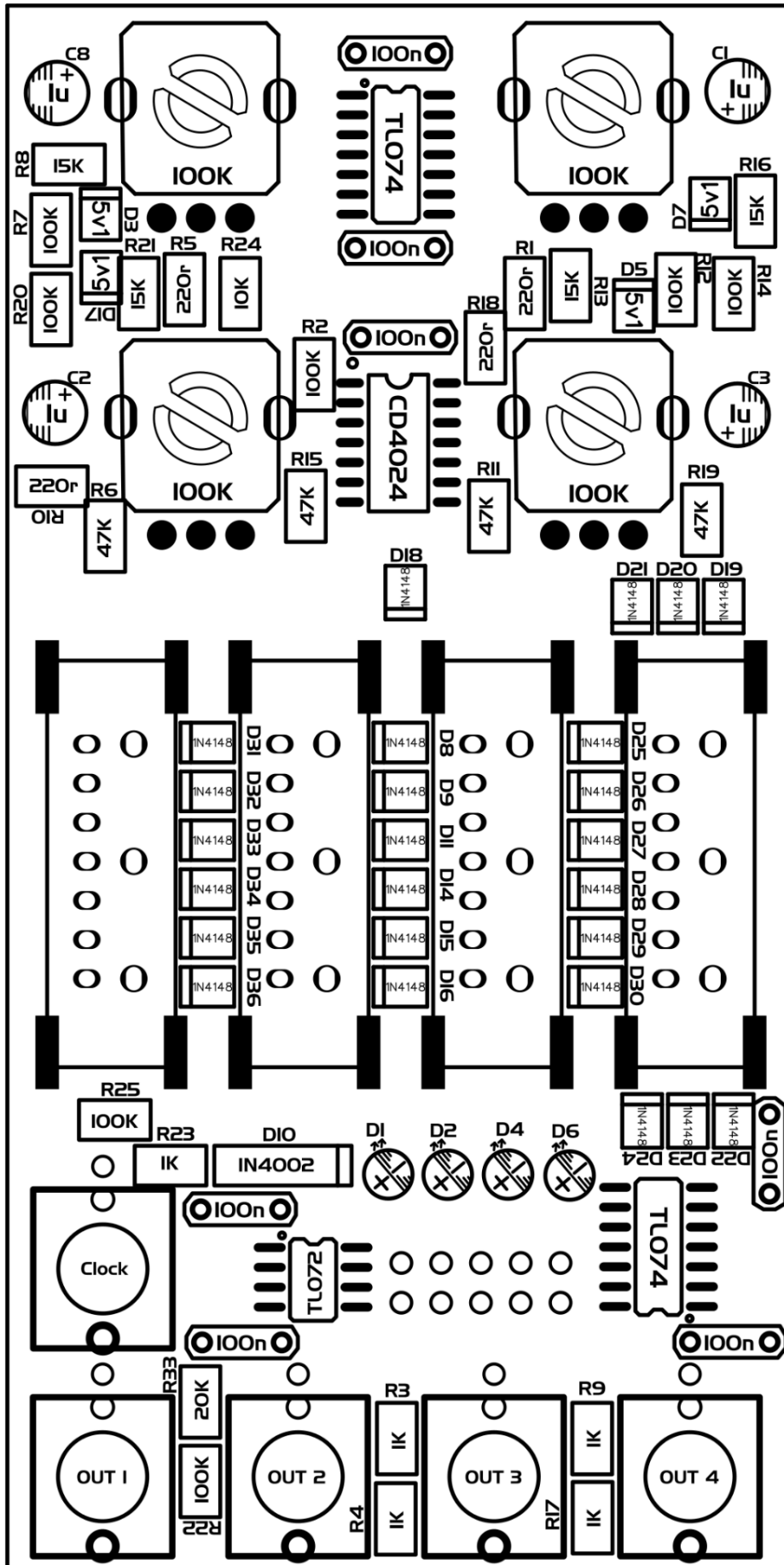
IDC-2.54-2X5P - x1

Jack sockets:

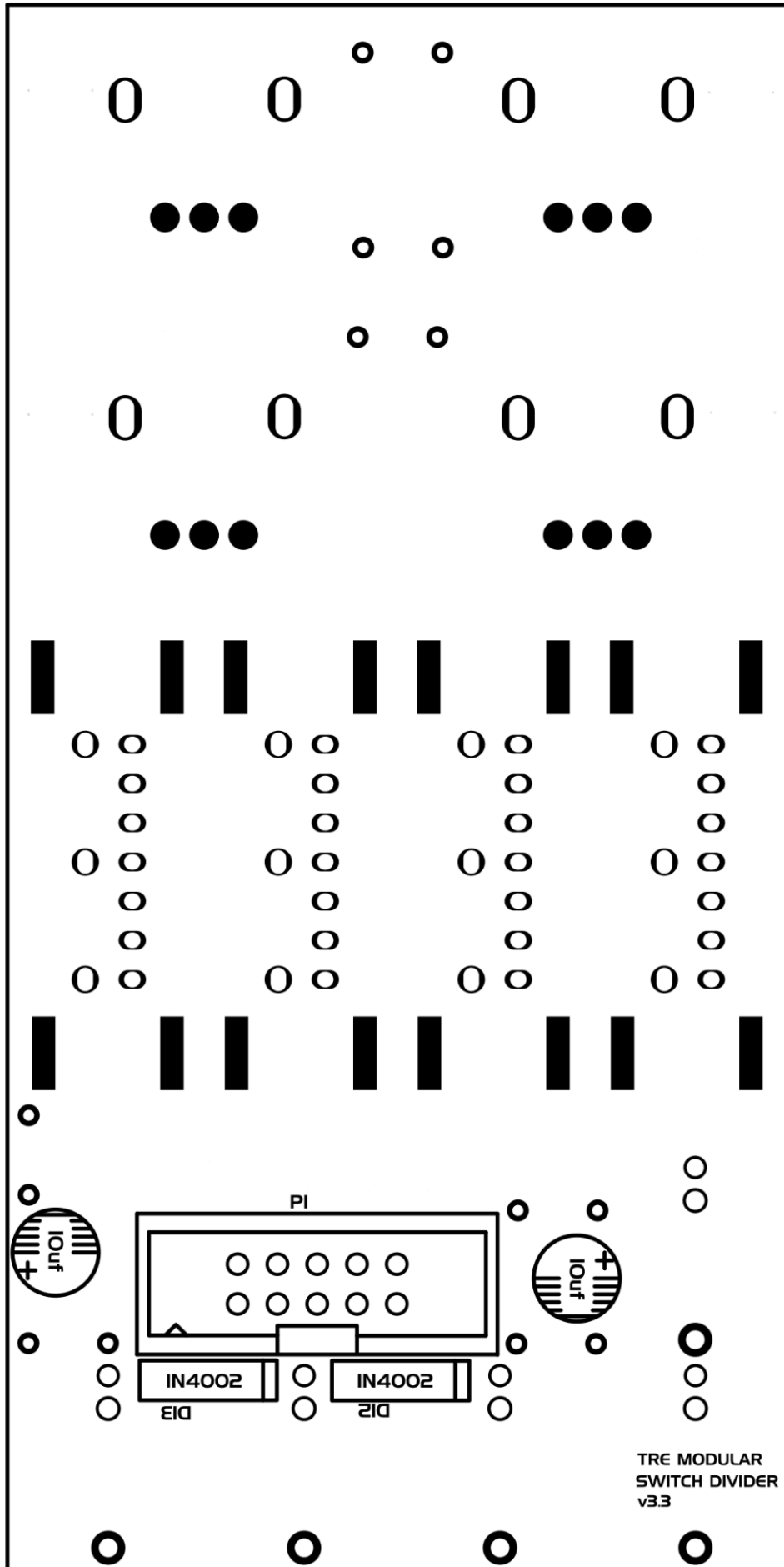
Mono Switched x5

Legend:

Front:



Back:



Assembly Guide:

Step 1: Identify and Sort Components

Organize the components into groups based on their types: resistors, capacitors, diodes, potentiometers, connectors, switches and jack sockets.

Step 2: Diodes (Front)

Insert and solder 1N4002 (1x) diode according to the legend.

Ensure correct orientation, referring to the diode's polarity.

Insert and solder 1N4148 diodes according to the legend.

1N4148 diodes are placed vertically.

Insert and solder 5v1 zener diodes according to the legend.

5v1 zener diodes are placed vertically.

The body of 1N4148 and 5v1 zener diodes should rest on the triangle part of the diode symbol.

Ensure correct orientation, referring to the diode's polarity.

For easier soldering, when 1N4148 or zener diode is placed on the PCB, bend the leg closest to the diode's body to keep it in place, and then solder the other leg. Once this is done, straighten the bent leg and proceed with soldering it in place.

Step 3: 100n Capacitors

Solder 100n capacitors onto the designated positions on the PCB according to legend.

Step 4: Resistors

Resistors are placed vertically.

Refer to the legend for resistor placement.

Start with the lowest resistance value and continue soldering resistors in ascending order, referring to the BOM and legend for values and placement.

For easier soldering, when a resistor is placed on the PCB, bend the leg closest to the resistor's body to keep it in place, and then solder the other leg.

Once this is done, straighten the bent leg and proceed with soldering it in place.

Step 5: 1uf Capacitors

Solder 1uf capacitors onto the designated positions on the PCB according to legend.

Ensure the capacitor is oriented correctly, paying attention to its polarity.

Step 6: Diodes (Back)

Insert and solder 1N4002 (2x) diodes according to the legend.

Ensure correct orientation, referring to the diode's polarity.

Step 7: Capacitors (Back)

Solder 10Uf capacitors onto the designated positions on the PCB according to legend.

Ensure the capacitor is oriented correctly, paying attention to its polarity.

Step 8: Power Connector (Back)

Solder the IDC connector (Power connector) into its designated spot. Start by soldering one pin and reflow the solder if the connector is not aligned. If everything is aligned, proceed to soldering the rest of the pins.

Step 9: Potentiometers, Jack Sockets, Slide Switches and LED`s

Insert all potentiometers, Jack sockets, Slide switches and LED`s into their positions on the PCB.

Put on the front panel and fasten it. Ensure everything is aligned properly and then solder everything in place.

Step 10: Final Inspection

Double-check your work against the BOM and legend.

Visually inspect your solder joints for bridges or cold joints.

Ensure all components are securely attached to the PCB.

Step 11: Installation

Power off your Eurorack system.

Connect the power cable, ensuring correct polarity.

Power on your Eurorack system.

If the module is working as it should. Insert the module into an available slot in your rack and secure it in place.

Enjoy!

Additional Information:

For any additional questions or support, please contact Tre Modular at support@tremodular.com .

Happy patching!

